

Ruijie RG-RSR10-01G-T 4G Wireless Router Datasheet

Ruijie RG-RSR10-01G-T 4G Wireless Router is specifically designed for small and medium businesses to power next-gen network solutions. The leading device supports routing, switching, security, 4G/3G connection all in one to adapt to various deployment scenarios. Extensive software features are also available to support VPN, MPLS, multicast applications and so on. Together with a wide range of backup solutions and H-QoS features, the RG-RSR10-01G-T router is an ideal companion for access solutions involving data and videos.

The compact router is uniquely designed for 4G/3G wireless connection, offering Ruijie's leading technologies such as VCPU, REF and X-Flow to protect against malicious attacks. A variety of H-QoS features enable secure deployment of multiple services at the same time. The RG-RSR10-01G-T router, with a built-in hardware encryption engine, ensures best-in-class security for key data protection.

With an industrial-grade design, the router delivers excellent performance under a wide temperature range. The internal 4G wireless module supports TD-LTE and FDD-LTE, and are backward compatible with 3G/2G standards enabling TD-SCDMA, WCDMA, GSM, convenient 802.11b/g/n, etc. The RG-RSR10-01G-T router is an ideal match for self-service banking ATM centers and difficult-to-deploy sites such as islands, military zones, power plants, mines, petrol refineries and scenarios alike.

HIGHLIGHTS

- All-in-One with 4G WAN, Routing and Switching Features
- Wide 3G/4G Band Support (TDD/FDD/WCDMA/TD-SDMA/GSM/GPRS)
- Small Desktop Form Factor Design
- Out-of-box with Advanced Routing Features
- Built-in with 5 10/100BASE-T LAN Ports
- Industrial-grade & Compact Design



RG-RSR10-01G-T (Front)



RG-RSR10-01G-T (Rear)

PRODUCT FEATURES

Built-in 4G LTE Support

- Support a wide range of 4G standards including TD-LTE, FDD-LTE, etc. Fully satisfy user demands on 4G wireless key uplink and backup link applications.
- Support a full set of IP services and features including interface backup, traffic analytics, network attack defense, etc.
- Enable two operating modes, namely the permanently online mode and on-demand dial mode. Users can flexibly choose the best-fit mode based on their account billing type.
- Antenna module is ready as an optional component for signal enhancement. The antenna professionally solves signal blockage and attenuation problems caused by obstacles in the deployment environment.

Industrial-grade & Compact Design

- The IP30-rated router can withstand a harsh temperature range of -30°C to 70°C.
- The compact design is adaptive to various scenarios, offering painless deployment with ultimate flexibility.

Security Features

- The built-in encryption engine largely enhances coding/decoding efficiency as the processes are completed by hardware. The feature fulfills demanding encryption requirements of resources such as multimedia data. The engine ensures that the forwarding and encryption take place at the same time. It also reduces the total invest costs as fewer number of interface slots is required.
- Support an extensive library of security features including firewall, IPsec VPN, Secure Shell (SSH), protection against invasion, DDoS protection, digital certificate, etc.
- Support AAA (Authentication, Authorization and Accounting), RADIUS and TACACS+, etc.

VPN Features

- Support IPsec VPN, GRE VPN, L2TP/PPTP as well as L2TP/PPTP traversal under NAT.

Software Features

- All Ruijie RSR routers implement the RGOS operating system with a complete set of routing features for various scenarios.
- Offering RJ45 interface, the router supports Ethernet, ARP and 802.1Q protocols.
- Support TCP/IP protocol suite on the network layer. The router hence enables IP, ICMP, IGMP, TCP and UDP protocols.
- Support various IP dynamic protocols such as RIP (V1/V2), OSPF (V1/V2), policy routing and so on.
- Support SNMP.
- Support Telnet and Reverse Telnet.
- Support DHCP Server, DHCP Client, DHCP Relay, TFTP, etc.
- Support backup, VRRP protocol for outstanding resiliency.
- Support PPPoE.
- Support DNS static domain resolution and DDNS.
- Support asynchronous file transfer protocol Xmodem upgrade.
- Support NAT, ACL, AAA.
- Support IPsec, L2TP, PPTP.

Painless Management

- Support SNMP to enable TFTP upload and download of configuration files.
- Support Telnet for remote control and management.
- Reduce maintenance cost by deploying flexible management methods using USB and SMS.

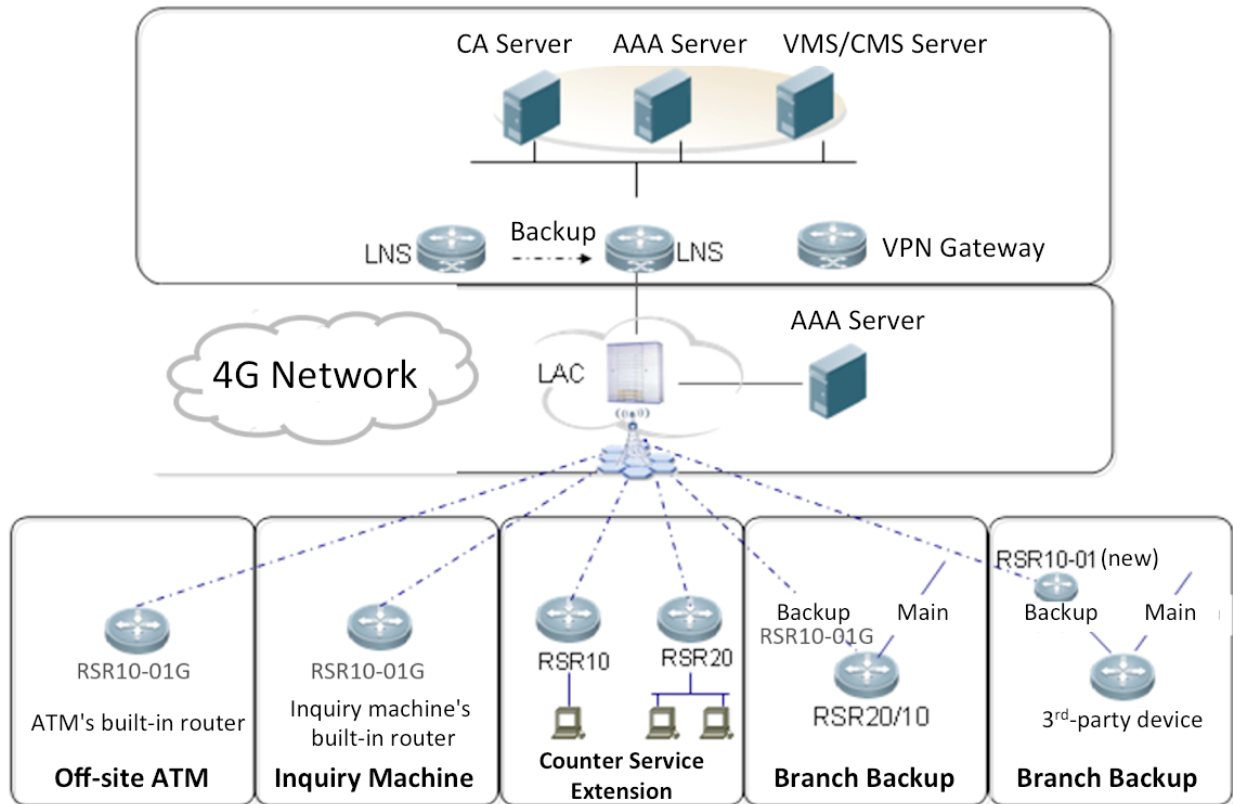
TECHNICAL SPECIFICATIONS

Model	RG-RSR10-01G-T (v1.0)
Fixed Ports	5 10/100BASE-T LAN ports 1 USB2.0 port 1 restore button 2 SMA external antenna interfaces (2*4G)
Flash	128MB
Memory	512MB
3G/4G Support	LTE FDD: B1/3/8 LTE TDD: B38/39/40/41 DC-HSPA+/HSPA+/HSPA/UMTS : B1/5/8/9 TD-SCDMA: B34/39 EDGE/GPRS/GSM : 900(B8)/1800(B3)
Routing Protocol	RIPv1/v2, OSPF

IP Rating		IP30
QoS	Congestion management	LLQ
	Congestion avoidance	WRED
	Flow supervision	CAR
	Flow shaping	GTS
	Others	QoS, H-QoS
Network Security	AAA	Support
	SSH	Support
	Firewall	Dynamic packet filter, state detection, attack defense, URL filtering, ARP and DOS attack protection
	NAT	NAT, NAT, NAT Log, cross VPN NAT
	GRE	Support
	IPIP	Support
	VPDN	L2TP, PPTP
	IPsec	IPsec VPN, reverse route injection, certificate import, NAT traversal, IPsec VRRP backup, QoS for IPsec
	ACL	Standard ACL, extended ACL
Authentication modes	Port security, MAC address restriction, MAC binding with IP and VLAN	
High Availability	VRRP, DLDP, TRACK, BFD for USR, BFD for RIP, BFD for OSPF, BFD for VRRP, GR for RIP, GR for OSPF	
Dimensions (D x W x H) (mm)	100 × 120 × 40	
Rack Height	1RU	
Safety Standards	IEC 60950-1, EN 60950-1	
Emission Standards	EN 300 386, EN 55022/55032, EN 61000-3-2, EN 61000-3-3, EN 55024, EN 61000-4-2, EN 61000-4-3, EN 61000-4-4, EN 61000-4-5, EN 61000-4-6, EN 61000-4-8, EN 61000-4-11	
Power Consumption	<6W	
Input Voltage	100V to 240V AC	
Input Frequency	50Hz to 60Hz	
Temperature	Operating temperature: -30°C to 70°C	
	Storage temperature: -40°C to 85°C	
Humidity	Operating humidity: 5% to 95% RH	
	Storage humidity: 5% to 95% RH	

TYPICAL APPLICATIONS

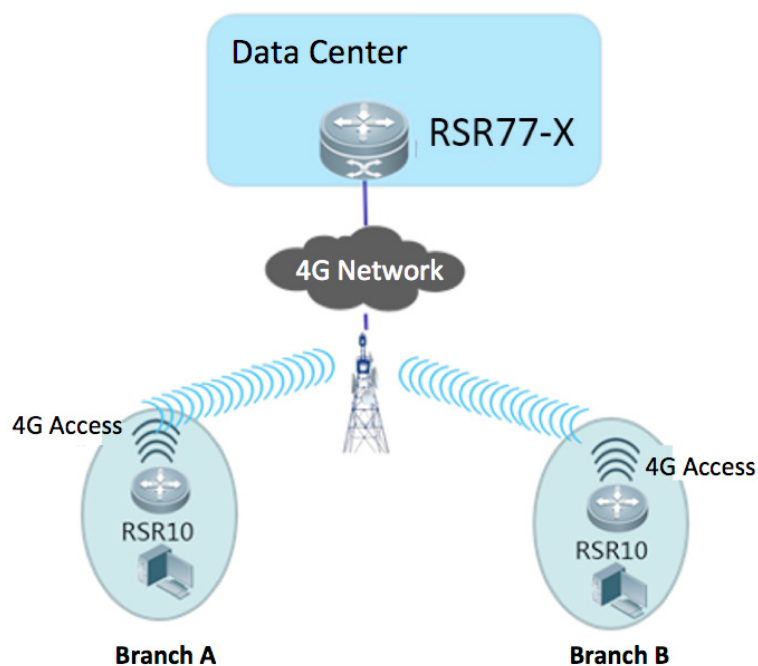
Self-service Banking Centre



Application features:

- Ruijie RG-RSR30 and RG-RSR50E router series take up the aggregation role. The RG-RSR10-01G-T router is deployed at the self-service device end as access.
- The RG-RSR10-01G-T router can flexibly act as the main or backup link. The router supports 4G standards including TD-LTE, FDD-LTE, WCDMA, TD-SCDMA and GSM.
- Strong security protection featuring VPN, IPsec encryption, digital certificate, etc.
- The RG-RSR10-01G-T router is compact in size for easy installation. Enabling SMS and USB management modes, the investment cost is further reduced.

Branch Access



Application features:

- The RG-RSR10-01G-T router, with 5 Ethernet ports, supports 4G/3G access. Supporting wired stable access from the branches can hence be guaranteed. An ideal match for high-resiliency scenarios such as supermarkets, charging kiosks, logistic counters and so on.
- The compact router is flexible in supporting various VPN modes, enabling services to be turned up quickly.

ORDERING INFORMATION

Model	Description
RG-RSR10-01G-T (v1.0)	Industrial-class 4G Wireless Router, 5 10/100BASE-T LAN ports, 1 USB2.0 port, 2 SMA external antenna interfaces (2*4G), 1 SIM card slot, support TD-LTE, FDD-LTE, WCDMA, TD-SCDMA, GSM, 802.11b/g/n (Bundled with 4G antennas)
Optional Accessories	
RG-ANT-2G3G4G0M	4G Rod Antenna, support 7 standards (all 2G/3G/4G bands)
SL10653G-2M	Omnidirectional 4G Extension Antenna, 2 meters, magnetic mount, support 698MHz to 2700MHz, support 4G/3G/2G of China Mobile, China Unicom, and China Telecom
C168-JL-2156-6M	Low-loss Extension Cable, 6 meters, for 3G/4G antenna (antenna sold separately)
C168-JL-2157-15M	Low-loss Extension Cable, 15 meters, for 3G/4G antenna (antenna sold separately)



Ruijie Networks Co., Ltd.

For further information, please visit our website <https://www.ruijienetworks.com>

All rights are reserved by Ruijie Networks Co., Ltd. Ruijie reserves the right to change, modify, transfer, or otherwise revise this publication without notice, and the most current version of the publication shall be applicable.